



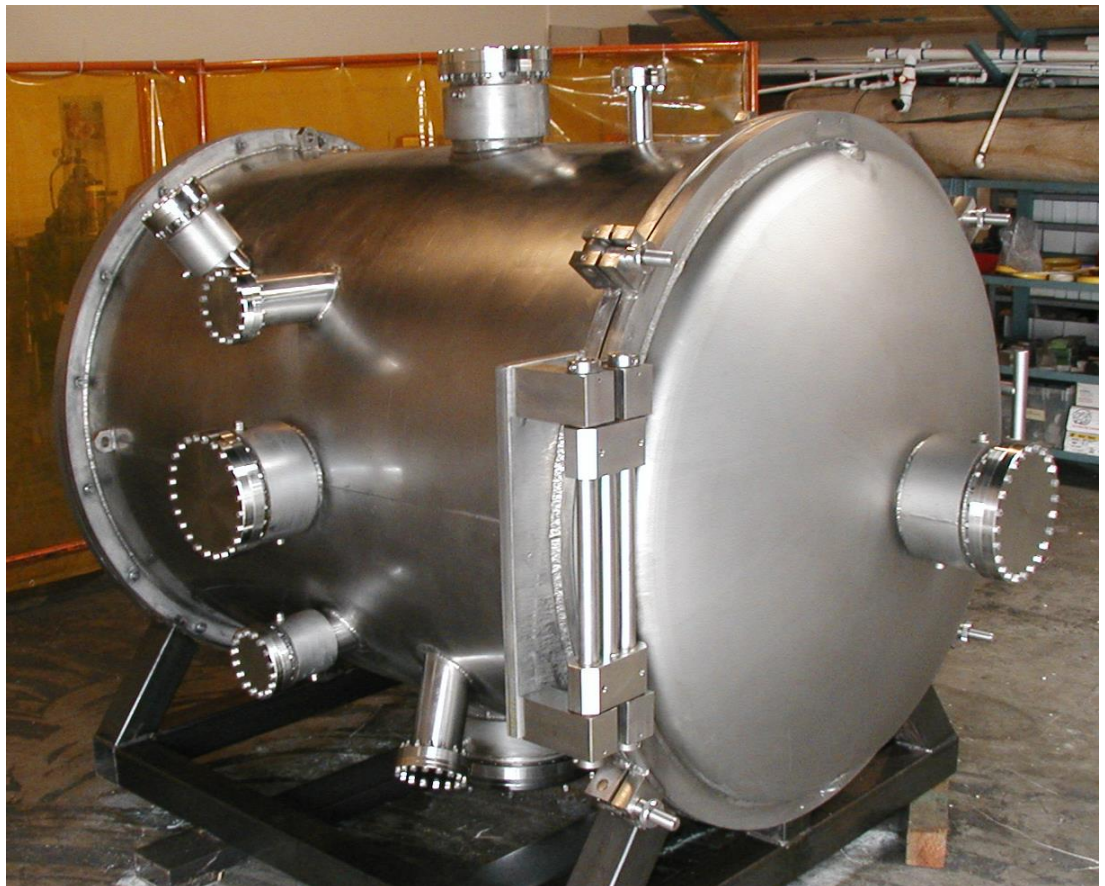
**NEVAC**  
NEVADA VACUUM

Division of **ASSOCIATED VACUUM SERVICES**

## **VF SERIES - STAINLESS STEEL HIGH VACUUM FURNACE**



- *36" TO 60" DIA, ALL STAINLESS STEEL CONSTRUCTION*
- *304 GRADE INTERNAL AND 316 GRADE EXTERIOR SHELL*
- *DOUBLE WALL BAFFLED WATER JACKET CONSTRUCTION*
- *PRECISION BEARING, MULTI AXIS STAINLESS HINDGE*
- *WATER COOLED "SHELLED" DOORS*
- *KNURLED KNOB THREADED, FORK STYLE, DOOR LATCHES*
- *SHOWN WITH OPTIONAL WATER COOLED FLANGING*
- *BOLTED, ORING FLANGED BACK PORT*



1235 Puerta Del Sol Suite 300, San Clemente, CA 92673  
PH 949-361-4905 FAX 949-361-4952  
Web Site: [www.avsvac.net](http://www.avsvac.net)